



A word from our CEO, Lisa Sauder

Bean's Cafe exists to fight hunger for all ages, one meal at a time, while providing a pathway to self-sufficiency with dignity and respect.



As I woke up today to -4-degree weather, I was grateful that no one seeking shelter was turned away last night at the Mass Emergency Shelter at Sullivan Arena. It was close, we had 399 out of 400 beds filled at the Arena, and another 62 people came to the warming

tents for food and shelter. Thanks to the hard work and partnership of multiple agencies, and support of the community, no one went unsheltered or hungry.

Every day we see the condition grow. In addition to the space for 400 clients at the Sullivan Arena, we have set up two warming tents in the parking lot. Bean's Cafe is also managing a non-congregant shelter for 140 people. Clients are referred to these sites as well as other non-congregant and congregant shelter sites by our Navigation team at the Sullivan Arena.

Connecting every client to resources including medical and behavioral health treatment, work force opportunities, application for federal

or state benefits, and housing is our priority. Finding that pathway to self-sufficiency can be difficult but, it is being completed. The system is working. People are finding jobs, reuniting with family, getting housing. Aside from all of this, our clients are finding a life beyond shelter and homelessness. This only happens because of you... our donors, our supporters, our volunteers, our partners.

We are changing lives.

I recently ran into two long term clients that were connected to stable housing from our Navigation team at the Sullivan. They shared with me that thanks to our team, they were able to get assistance with treatment for alcoholism and had both been sober for one year and one week. The joy and pride on their faces still makes me smile. They looked so healthy and happy; it was an amazing moment for me. The gratitude they have for our team and the community that makes our work possible was humbling.

We are making a difference, one person at a time, solving one problem, and taking one barrier out of the way, at a time. I always tell our staff that every day they can help someone. Truly help someone.

IN THIS ISSUE

- Oh What a Year!
- Community Awards
- How Can You Lend a Hand in 2020?
- Donor Highlights
- Hunker Down - Step Up Campaign, Phase II
- We're launching a Mobile Food Distribution Program

I am frequently asked how we "solve" homelessness, and I always reply that we currently have over 600 clients we are assisting. We need over 600 different answers. No one had the same exact path that led them to our door, and every individual has specific needs. Building out a model that is client-centered and delivers services on demand has been a key to the success of helping our folks' transition successfully out of shelter. With your continued support this will keep happening. One person at a time.

Thank you for your belief in our mission and for understanding that no one should go hungry or unsheltered in Anchorage.

Lisa Sauder

Oh What a Year!

The year 2020 was unlike any other. We are happy to see it behind us and have moved into 2021 with a hopeful outlook. While last year was certainly a doozy, and left us facing circumstances of epic proportions, it was also good to us in many ways. Upon the arrival of the pandemic in Anchorage we were able to stand up the mass emergency shelter at Sullivan Arena and Ben Boeke arenas, turn our Bean's Café facility into a food production and storage facility, increase our staff by more

than double to meet the growing needs in our community.

- We are overseeing 600 individuals - 400 of those in the Sullivan Arena and another 200+ in alternate beds.
- Within our shelter we are providing referrals to services through our on-site navigation team, medical care, laundry, showers, and other resources like AA meetings once a week.
- We have served over 220,000 meals through The Children's Lunchbox and over

430,000 through Bean's Cafe - for a total of 640,000+ meals since mid - March.

- We have assisted nearly 200 individuals in exiting shelter for a positive outcome-employment, reunification with family, ability to leave state, find housing, etc.

While the pandemic has caused a lot of upheaval, we are better equipped and able to lend a helping hand to more individuals in need than ever before. This we are so thankful for. It is really a result of the generosity of our community.



Community Awards

as Chosen by Team Bean's Cafe

Each year our team members come together to honor you! Some of our biggest cheerleaders! Through an internal vote we choose individuals and organizations who have made an especially large impact on our organization each year. Obviously, this is a tough choice and there are so many of you who deserve huge kudos. We absolutely can't move forward with our mission without you. You are critical and we thank you for your belief in us and those we serve.

Congratulations to our 2020 Winners:

- **Small Business Partner of the Year:** Altura Bistro
- **Corporate Partner of the Year:** TOTE
- **Non-profit partner of the year:** Sullivan Arena Partnership (Anchorage Neighborhood Health, South Central Foundation, Providence Breakthrough)
- **COVID response partner of the year:** SYSCO
- **Client Volunteer of the Year:** Freddy Bennett

Our Winners from 2019:

- **Community Volunteer of the year:** Gloria Hickel
- **Client Volunteer of the year:** Oscar Henry
- **Non-Profit Partner of the year:** Sparc: a creative place / The ARC of Anchorage
- **Corporate Partner of the Year:** Matson
- **Small Business Partner of the year:** Mark Rempel & Rempel Family Farm

Bean's Cafe and The Children's Lunchbox rely heavily on the donation of food (and non-food) items to serve thousands of individuals in the community.

The following wish lists include our most needed and requested items for each aspect of our program:

Bean's Cafe Food Wish List

- Ground Beef
- Beef or pork roast
- Breakfast sausage
- Onions
- Canned Veggies

The Children's Lunchbox Wish List

- Cans of chicken and tuna
- Macaroni and Cheese
- Shelf stable milk
- Individual oatmeal packets
- Hand and Foot Warmers - This is a general need for our logistics team who spend a lot of time outside.

Bean's Cafe Mass Shelter Wish List

- Blankets
- Coats (men and women- all sizes)
- Mittens and gloves
- Winter hats
- Underwear (men and women - all sizes)

Please note, all **food donations** should be dropped off at Bean's Cafe, located at 1101 E. 3rd Avenue. This can be done 7-days a week between 9am and 4pm. All **non-food donations** can be dropped off at the Sullivan Arena each day of the week between 6am and 10:30pm. When you arrive, please pull up to the curb, near the warming tents, and text or call 907.310.4091 for staff assistance. Be sure to ask for a tax receipt before you leave. Any questions about how to donate, what to donate, or how to start a food or supply drive? **Please contact us:**

info@beanscafe.org



Apply for your PFD by March 31 and Pick. Click. Give to your favorite organizations.

You have until the end of August to change your allocation amount.

How Can You Lend a Hand in 2020?

Here are just a few ways you can give us support this year.

We of course love new, fresh ideas and are here to assist you with any questions.

Donate securely, online at beanscafe.org

You can choose which program you would like to support (Bean's Cafe or The Children's Lunchbox), choose how you'd like to see the money used, and designate a 50/50 split between programs.

- Mail a donation for Bean's Cafe and/or The Children's Lunchbox to: Bean's Cafe, Inc. 1020 E. 4th Avenue, Anchorage, AK 99501
- Watch our Facebook pages for donate now opportunities (specific to a campaign) or use the "donate" option on the front page of each of our Facebook pages.
- Start your own fundraiser on Facebook. Our supporters have great luck with these, and it is a fun way to celebrate a birthday too!
- Donate food! All food items can be delivered to 1101 E. 3rd Avenue between 9am and 4pm, 7-days a week. We unfortunately can't accept pre-prepared food. Our kitchens are licensed,

commercial facilities and we follow strict food safety guidelines and policy.

- Donate items for the men and women in shelter: underwear, socks, clothing, blankets, toiletries, feminine hygiene products, blankets, etc. at the Sullivan Arena. Pull up near the tents in the parking lot and phone 907.310.4091 for assistance. Please do not drop food donations at the Mass Shelter at Sullivan Arena. We also cannot accept items for children.
- Volunteer to assemble pantry packs for children and families. You can do this at home (contact us for details, info@beanscafe.org) or you can visit our "Give Help" section on the website and sign up for a shift at the off-site warehouse.
- Items of note - Please do not drop off or mail monetary donations to any of our facilities except 1020 E. 4th Avenue, Anchorage, AK 99501. This is our Administration office and assures prompt, safe delivery to our finance and development teams. We do keep our building locked, so when you arrive please call 907.433.8601 for assistance. We are open Monday – Friday 8am – 4pm. You may also schedule a time to visit in advance. info@beanscafe.org

EVENTS!

What the Heck?

We wish we had a set timeline for when we can start back with the well-known **Empty Bowl Project**, presented by **ConocoPhillips Alaska** along with **Nourish Their Dreams** and **Toast to the Coast**, Presented by **Pacific Seafood Processors Associations**.

The loss of these events has been a huge setback for us, but we can't stay in dwelling mode. We continue to keep our mission at the forefront, because it is our goal that we continue the fight against hunger and homelessness.

Want to stay connected and informed?

- Like us and follow us on our Facebook pages (The Children's Lunchbox and Bean's Cafe)
- Instagram [Instagram.com/beanscafeak](https://www.instagram.com/beanscafeak)
- Our website www.beanscafe.org
- Electronic Mailing List (E-Blast)- email us to be added info@beanscafe.org We will not share your information with anyone.
- USPS Mailing List- Make sure we have your correct mailing address on file - email us at the address above.



has stepped up to make sure
NO CHILD goes hungry
in Anchorage.



Your \$10 can feed a family of four
for an entire meal.
Will you join us?
Donate Now.



children's
lunchbox



Donor Highlights

While it is impossible for us to thank every donor - we sure do try our best to acknowledge each one of you in some way. We simply cannot function without the support and belief in our mission by the generous community. As a grass roots organization, we rely most on private and corporate donations to serve those who need us most. Here are a few organizations that helped us a lot this past year:



Anchorage Moose Lodge

Anchorage Moose Lodge has been a great supporter of Bean's Cafe and The Children's Lunchbox. Both by acting as a drop off location for nonperishable food items and most recently by donating \$6000 in clothing and cash. At a time when Bean's is sheltering 400 individuals and providing meals and assistance to 200 plus in shelter decompression beds, donations like this are an integral part of keeping people warm and safe when they need to be out of the comfort of shelter. Winter months are incredibly difficult, and cold weather gear is one more preventative measure in ensuring our homeless population stay out of vulnerable situations associated with the bitter temperatures.

Members of the Moose Lodge delivered 25 boxes of warm weather items for our male and female clients, to include the following: blankets, long underwear, and jackets. In addition, they provided a cash donation for us to purchase more items, including food for our Children's Lunchbox Program. This was all made possible by fundraising efforts from Governor Jamie Miller and the men, Loyal Order Of Moose #1534, Sr. Regent Patricia Callaghan and the women, Women Of The Moose #139, Chairman Brian Holmes of Moose Legion #51, and President Michael Dyar with the Council of Higher Degree members. The Anchorage Moose Lodge #1534/#139 is located at 4211 Arctic Blvd., Anchorage, AK 99503. The Anchorage Moose Lodge was formed in July 1916 and has been a loyal contributor to local non-profit organizations and schools in Anchorage. Willow Crest Elementary school is Anchorage Moose Lodge's adopted school.

Pacific Seafood Processors Association

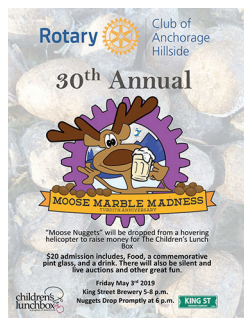
Bean's Cafe, Inc. is very proud and honored to have a long history of support from the Pacific Seafood Processors Association. Their role as the presenting sponsor of Toast to the Coast, an event to end hunger, has become an integral part of our success each year and allows us to raise more than \$100,000 to directly feed at-risk adults and hungry



children in Alaska. We were incredibly grateful when they came to us this past year, knowing we had to cancel the event for December, with a check for another \$20,000 and a challenge to our donors and their partners in fisheries to match that amount- increasing the gift to \$40,000. We put out the call and it was answered. We quickly hit our \$40,000 goal which has directly funded our 21,000-weekly output of meals.

Anchorage Rotary Clubs

The Rotary Clubs in Anchorage have been so incredibly generous to The Children's Lunchbox especially. Whether planting fresh produce to later donate to our programs, hosting events in our honor, or showing up with check in hand to help us purchase much needed equipment or supplies used to feed children- and now, entire families. The clubs truly live up to Service Above Self and have donated an astounding \$50,000+ in donations of cash and supplies. This of course does not include the countless of hours given through volunteering and special projects.



Volunteering - When can you do it?

Darn it! Covid-19 has made it impossible for us to allow on-site volunteers since March 2020. But stay connected with us on our social media accounts and the volunteer page of our website for upcoming opportunities. We need you; we want you; we value you! Safely of course! We can't wait to open the door to new volunteer opportunities. If your giving heart and cannot wait, please email us and we can send you details on how to assemble pantry packs from home for The Children's Lunchbox. We do have limited shifts available now to assemble pantry packs at an off-site facility. Details can be found on our website under the Volunteer section.



Hunker Down Step Up Campaign, Phase II

Last March, when the pandemic found its way to our community, we put out a call for help. We asked Anchorage to help us raise \$500,000 to assemble 50,000 pantry packs at \$10 each. With a record number of Alaskans filing for unemployment benefits we knew families who were already on the edge or barely making it would struggle more. Difficult decisions between paying bills and buying food would increase. The Children's Lunchbox stepped up to make sure no child went hungry in Anchorage. With the generosity of businesses and individual donors -like you- we are making a huge impact.

Due to the unwavering support of our community, we raised the initial \$500,000 we needed to ensure pantry packs could be distributed to help stabilize and feed families between March and December. However, we had no way of knowing how great the demand would be. But we are seeing it! To continue to meet the call of the families who need us, we again are asking for the help of the community. We need to raise another \$500K. Not only for pantry packs, but our fresh meals.

In addition to the work with our current partners and food sites, we will soon expand our mobile food distribution program allowing us to deliver and distribute meals throughout our community, five days a week, for up to eight hours a day. This will reach more children and families than ever before and serve those individuals who cannot otherwise access our distribution sites, are not yet back in school, or have other barriers to accessing food.

Since mid-March 2020, we have distributed over 220,000 meals to hungry children and families through pantry packs and fresh meals. This year that number will continue to increase, especially with the roll out of our mobile distribution program and trailer. We are so grateful for the opportunity to give the families we serve a little peace of mind during these trying times. Right now, we are taking it one week at a time.

We are limited by the number of pantry boxes and meals we can produce only by financial resources at this point. We have a commercial kitchen which continues to produce meals, a devoted food services team, and a facility to prepare the pantry packs and staff to distribute them. Simply stated: We continue to need money. We are thankful for the Anchorage Police Citizen Academy Alumni Association, GCI, TOTE and Dimond Center who have kicked us off with donations of \$10,000 or more.

GCI, Alpha Media Group and Ohana Media Group are on board to help launch a public service campaign to engage individual donations. We will be including logos of organizations who give at the \$10,000 level or higher on donated media space on a rotating basis, in addition to name mention wherever feasible.

Questions? Need an invoice or more details? Please contact **Diana Arthur**, Development Director, Bean's Cafe and The Children's Lunchbox at darthur@beanscafe.org

THANK YOU!

These amazing organizations have stepped up to help us reach our goal of \$500,000 to feed children and families. Will you join them?

ANCHORAGE POLICE
CITIZEN ACADEMY
ALUMNI ASSOCIATION

ConocoPhillips

Rotary
Anchorage Rotary Club

GCI
TOTE
Dimond
Center



A special thank you to our media partners:
OHANA Media Group and Alpha Media

children's
lunchbox
a program of Bean's Cafe

Leadership Staff:

Lisa Sauder, Chief Executive Officer (CEO)
(907) 433-8611 | lsauder@beanscafe.org

Scott Lingle, Chief Operating Officer (COO)
(202) 302-9190 | slingle@beanscafe.org

Bruce Hilton, Chief Finance Officer (CFO)
(907) 433-8601 | beansap@beanscafe.org

Diana Arthur, Development & Communications Director
(907) 433-8603 | darthur@beanscafe.org

Wendy Frazell, Human Resources Director
(907) 433-8606 | hr@beanscafe.org

Cathleen McLaughlin, Shelter Operations Director
(907) 342-5380 | cmclaughlin@beanscafe.org

Jaime Earp, Communications Manager
(907) 726-7766 | jearp@beanscafe.org

Rochelle Wonhola, Executive Coordinator
(907) 433-8604 | rwonhola@beanscafe.org



Bean's Cafe, Inc.
1020 E. 4th Avenue,
Anchorage, AK 99501

Exciting News!

We will soon launch our mobile food distribution program in Anchorage.

Through grants, our donors, and various organizations, we have in our possession a beautifully wrapped food trailer! Soon, accessing food will know no limits for hungry and food insecure individuals. A special shout out to Nourishing Neighbors who awarded us a grant to purchase the mobile food trailer and Kendall Ford of Anchorage who helped us purchase the beautiful Ford F250 that will pull the trailer. This program is aimed at increasing participation in and access to meals and along with a partnership with Covenant House Alaska and our staff, our commitment of keeping as many people fed in our community as possible is stronger than ever! We will continue our Fight Against Hunger!

Stay tuned to our Facebook pages for more information.

